

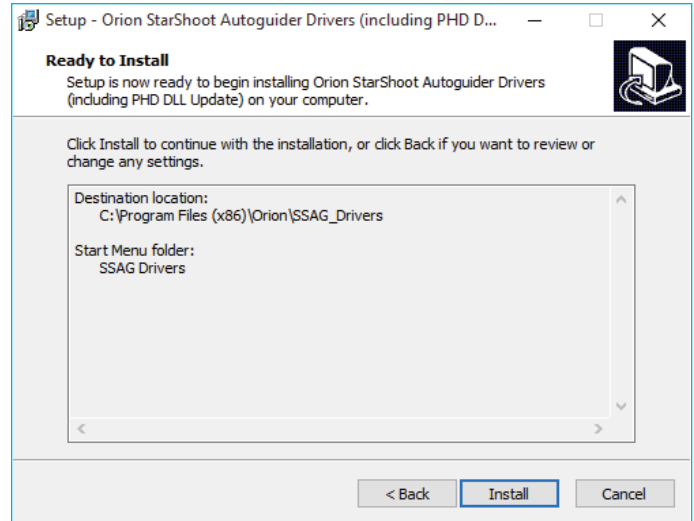
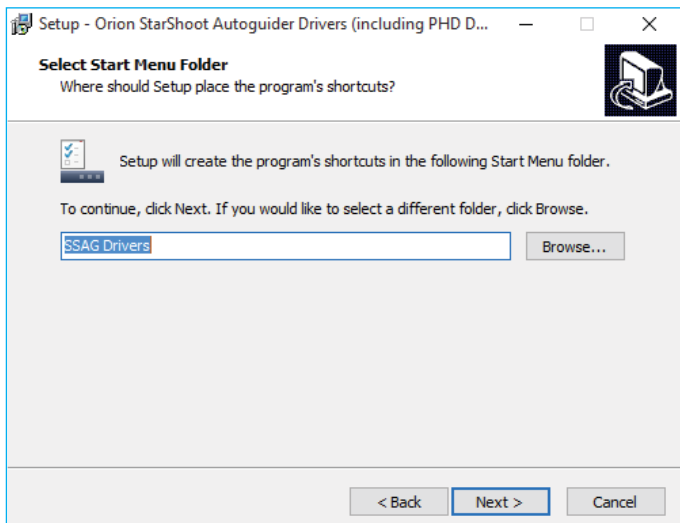
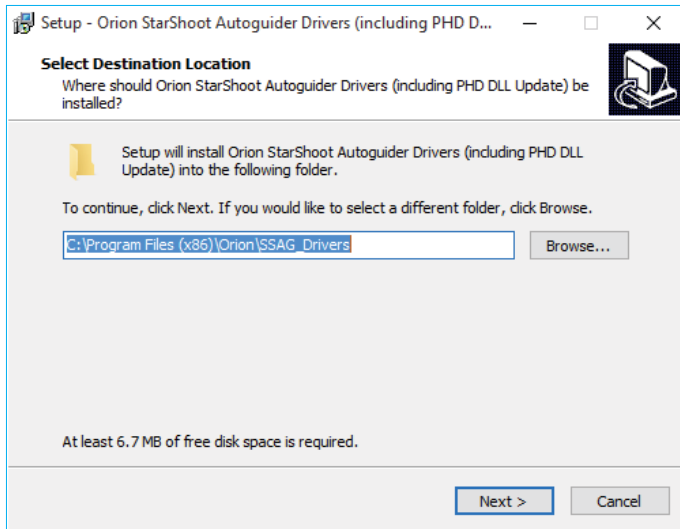


## Driver Installation (Win 10/8/7) for StarShoot AutoGuider

Orion is pleased to announce the release of a new StarShoot Autoguider driver with support for Windows 10 and backwards compatibility to Windows 7 and 8/8.1 as well. If you already have a previous release of the driver installed—and are not encountering any connectivity issues it is not necessary to update your current setup.

In order to use the StarShoot Autoguider you must first download and install drivers. All hardware requires driver files in order for the operating system to properly identify the device and communicate commands. Please follow the instructions below prior to plugging the StarShoot AutoGuider into a USB port. It is recommended that you always use the same USB port whenever you use the StarShoot AutoGuider or it may be necessary to reinstall the drivers.

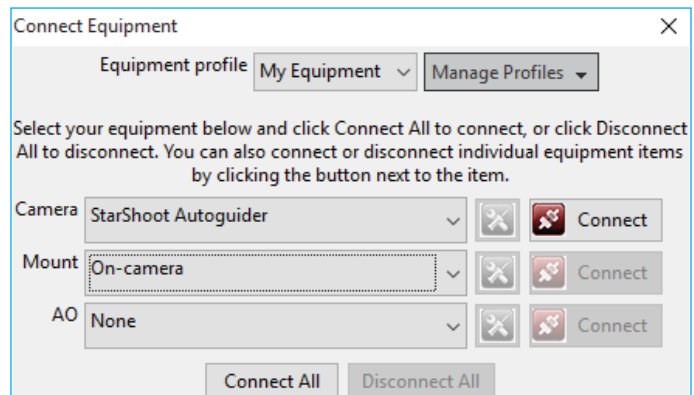
After downloading the new driver from [www.telescope.com/sag](http://www.telescope.com/sag) you will find a zipped file entitled SSAGdrvfull5.1.zip. Extract the file and allow the folders to install to their specified locations. You will see the following three screens in succession; just click Next for the first two, then at the third screen click Install to load the drivers.



Once this process has completed open the PHD software and click the camera icon on the lower left



Choose as your Camera StarShoot AutoGuider and for Mount select On-Camera. Then click Connect All at the bottom.



You can test the connection by looping a short exposure of 0.002 seconds. The screen in PHD should flash grey or white static if the autoguider is not focused. This is normal and does indicate that the camera is active and PHD is responding to the hardware. At this point please proceed to the section in the manual entitled: *Getting Started During the Day* to familiarize yourself with the basic functionality of the StarShoot AutoGuider.